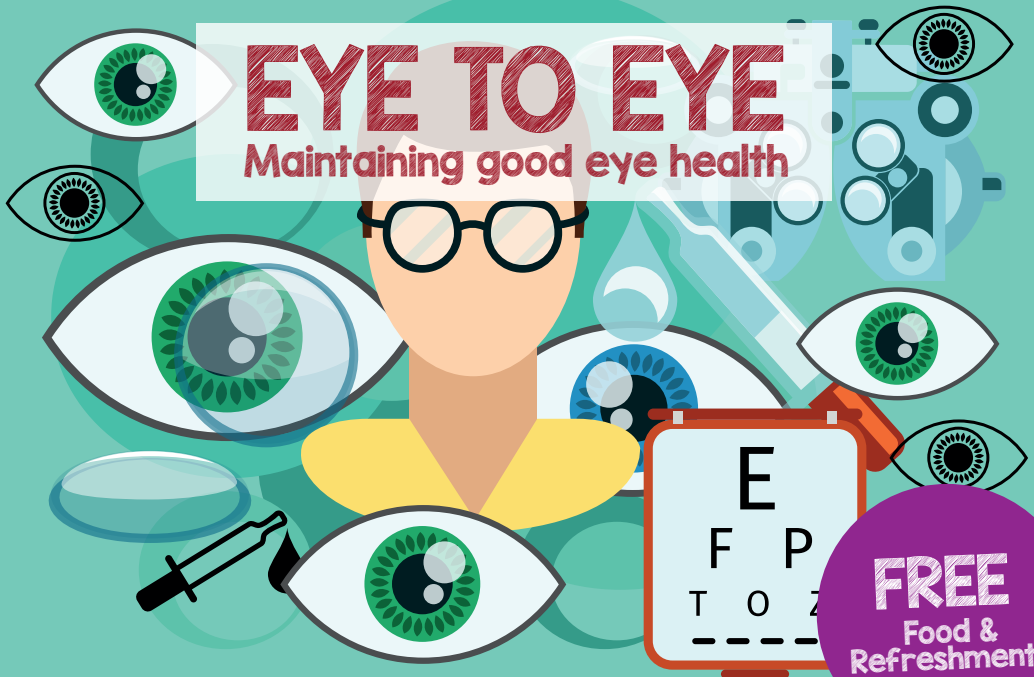


Eastern Community Engagement Forum

EYE TO EYE Maintaining good eye health



You are warmly invited to the

Eastern CEF Public Forum

6.30pm Wednesday 23rd
November 2016
Riccall Regen Centre,
Landing Lane,
Riccall, YO19 6PW

An interactive workshop covering all aspects of eye health, vision screening, reducing the risk of blindness, and support services for people who have sight problems.

Presented by Emily Havercroft, Selby District Vision

Also the opportunity to speak to your Councillors, staff from Selby District Council, North Yorkshire Highways, North Yorkshire Police, and other Community and Voluntary Organisations 'Please bring along any prescription glasses that you use to the event'.

Visit www.selby.gov.uk/eastern-area-cef Please contact the Democratic Services team for further information on **01757 292037** or **DemocraticServices@selby.gov.uk**

